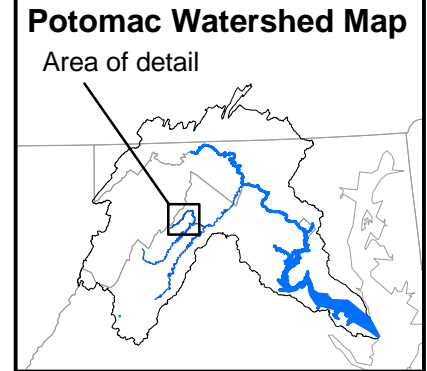
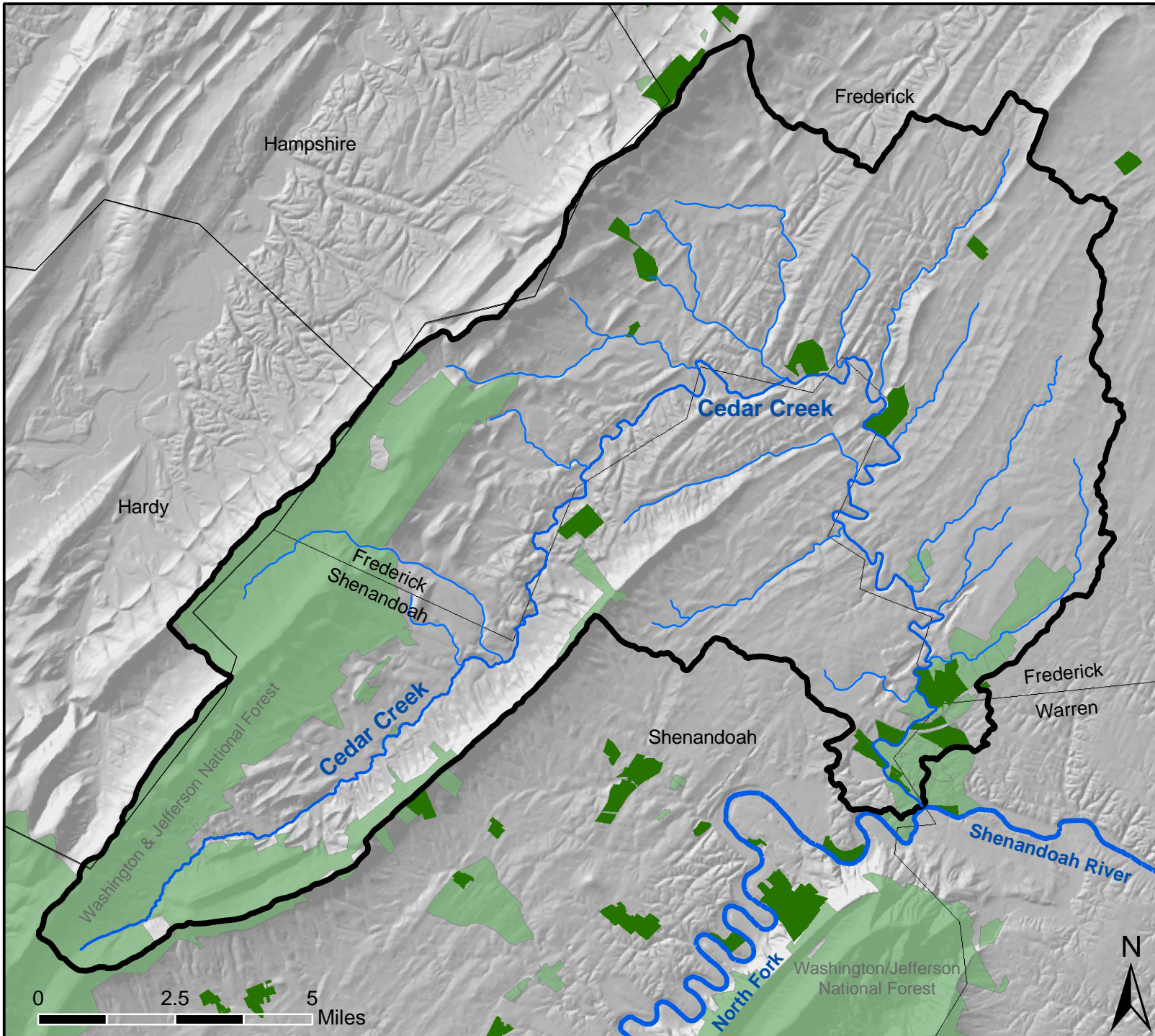


Cedar Creek Watershed



Legend

- Cedar Creek
- Cedar Creek Watershed
- Private Conservation Lands
- Public Protected Lands

Cedar Creek Statistics:

- * 40 miles long
- * 40% in stream conservation unit, a VA DCR protection priority.
- * Tributary to N. Fork Shenandoah R.
- * 157 sq. mi. watershed
- * 1,670 ac. conservation easements
- * 21,718 ac. state/federal forest/park



Map by Potomac Conservancy, 1/26/2011.
Easement data from VA DCR, Dec. 2010.

File: 11x8.5_cedar_creek.mxd